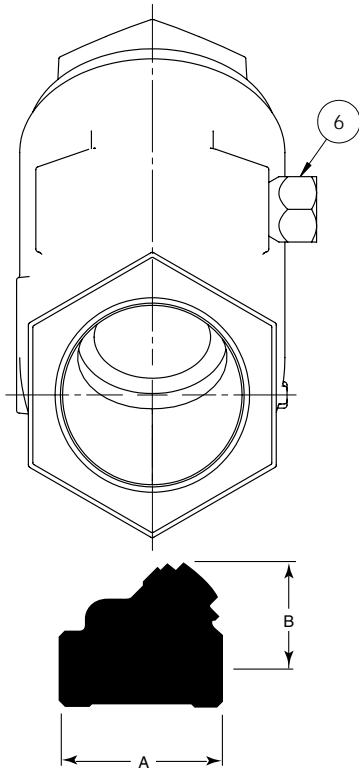
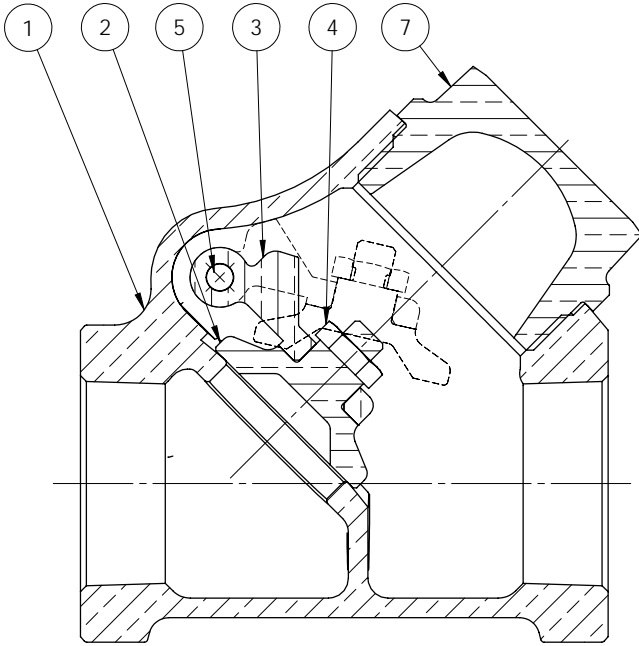


Class 150 • Threaded Cap • Brass/Bronze Disc • Threaded Ends

Swing Check Valve* Figure B-321



Materials of Construction

No.	Description	Material	ASTM Spec.
1	Body	Bronze	B-61 C92200
2	Disc	(1/4" - 3/4") Brass	B-16 H02
		(1" - 2") Bronze	B-61 C92200
		(2 1/2" - 3") Bronze	B-62 C83600
3	Hinge	Bronze	B-584 C87600
4	Lock Nut	Brass	B-16 H02
5	Hinge Pin	Stainless Steel	A-276 Type 304
6	Hinge Pin Plug	Brass	B-16 H02
7	Cap	Bronze	B-61 C92200

NOTE:

The addition of the letter "K" at the end of the figure number designates valves assembled & tested in the USA. Materials of Construction & Dimensions are the same.

Industry Standards

Complies with MSS SP-80 Type 3

See Page 6 for Pressure-Temperature Ratings

Dimensions and Weights

Inches (millimeters) - Pounds (kilograms)

Valve Size	Dimensions		Wt.
	B	A	
1/4	1.49	2.14	0.50
	(38)	(54)	(0.23)
3/8	1.49	2.14	0.50
	(38)	(54)	(0.23)
1/2	1.64	2.15	0.60
	(42)	(55)	(0.27)
3/4	1.92	2.71	1.00
	(49)	(69)	(0.45)
1	2.52	3.18	1.50
	(64)	(81)	(0.68)
1 1/4	2.95	3.81	2.20
	(75)	(97)	(1.00)
1 1/2	3.43	4.34	3.40
	(87)	(110)	(1.55)
2	4.19	5.11	5.40
	(106)	(130)	(2.45)
2 1/2	5.04	6.12	9.00
	(128)	(155)	(4.09)
3	5.97	7.25	14.50
	(152)	(184)	(6.59)

* Not recommended for use in reciprocating air compressor service.